

TE'S TAPPATLINK 3WAY OPEN / SWITCHING POINT LINK PILLAR

RESIDENTIAL / INDUSTRIAL DISTRIBUTION PILLAR FOR LOW VOLTAGE (LV) NETWORKS

KEY FEATURES

- 3x linked mains connections from 185mm² up to 300mm², accommodates Al or Cu round or sector cables
- 6 service ports per phase, 1x70mm² and 2x50mm² per each side of the unit
- Staggered main connections run vertically to minimize cable crossings
- Phases independently separated and insulated
- Easier, faster and safer to install and operate

TE Connectivity (TE)'s TAPPATLINK 3way open / switching point link pillar is designed to maximize flexibility when it comes to standard link and isolation procedures and load balancing.

This true 3way link pillar is prominently applied in a 3 phase, 400 A, 50 Hz MEN (Multiple Earthed Neutral) distribution system. It can be used in residential or industrial applications to energise or isolate the customer's LV network, as well as supply multiple LV feeders in parallel.

This new 3way link pillar can be installed easier and faster than its predecessor, with less cable core bending needed for terminating into the double bolted terminals. Each main core is independently separated and insulated. No cross phasing is possible.

This fully insulated and touch-safe unit will provide outstanding flexible control of your LV networks. It is independently tested to meet the requirements of utilities.

Customers can count on consistent, high quality products, driven by TE's proven innovation and backed by our extraordinary customer support.

TE'S TAPPATLINK 3Way Open / Switching Point Link Pillar



**TABLE 1: 3WAY OPEN / SWITCHING POINT LINK PILLAR
KIT CONTENT**

Quantity	Description
1x	3Way Link Pillar
3x	Breakout Heat Shrink
6x	Activating Link
3x	T- Shape Link Key
9x	2 Screw Phase Dovetails
3x	2 Screw Neutral Slotted Dovetails
4x	Phase and Neutral Covers
20x	Self-tapping Cover Screws
1x	Waterproof Storage Bag
1x	Installation Instruction

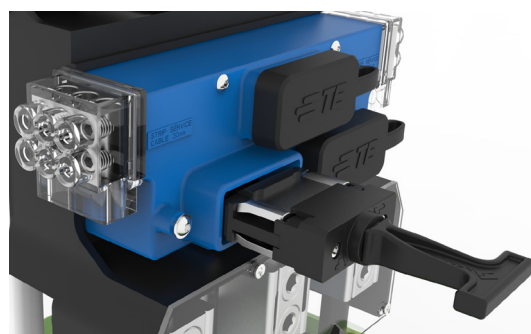
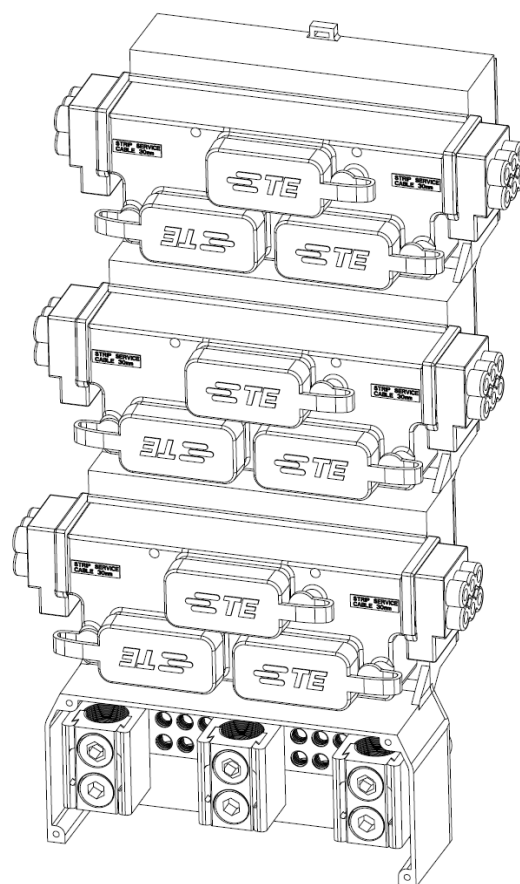
ORDERING INFORMATION

Part Number	Description
TAP10550	3way linked pillar
3WAY-SUPPORT-KIT *	Reusable legs for TAP10550

* Support leg kit is re-usable and not needed for every 3Way Switch purchase.

FEATURES AND BENEFITS

- Fully insulated and touch safe system; no exposed live contacts
- True 3way switching to energise or isolate LV mains, or to supply multiple LV feeders in parallel
- Ability to include additional service connections if required
- Tinned brass connections eliminate possibility of corrosion
- Suitable for both Aluminum and Copper cables
- Complete with installation instruction, network and switching labels
- Proven and reliable dovetail connection; no specialized tooling is required
- Make / Break tested – 100 x 100 amps; then 10 x 400 amps
- Tested to 600 amps



FOR MORE INFORMATION: TE Technical Support Centers

USA:	+ 1 800 327 6996
Canada:	+ 1 (905) 475-6222
Mexico:	+ 52 (0) 55-1106-0800
Latin/S. America:	+ 54 (0) 11-4733-2200
France:	+ 33 380 583 200
UK:	+ 44 0870 870 7500
Germany:	+ 49 896 089 903
Spain:	+ 34 916 630 400
Italy:	+ 39 333 250 0915
Benelux:	+32 16 508 695
Russia:	+7 495-790 790 2-200
China:	+ 86 (0) 400-820-6015
Australia:	+ 61 29 554 2695
New Zealand:	+ 64 9 634 4580

te.com/energy

© 2019 TE Connectivity. All Rights Reserved. EPP- CA-DDS-3287-TAPPAT-04-19-EN

TE Connectivity and TE connectivity (logo) are trademarks. Other logos, product and/or company names might be trademarks of their respective owners. While TE has made every reasonable effort to ensure the accuracy of the information in this brochure, TE does not guarantee that it is error-free, nor does TE make any other representation, warranty or guarantee that the information is accurate, correct, reliable or current. TE reserves the right to make any adjustments to the information contained herein at any time without notice. TE expressly disclaims all implied warranties regarding the information contained herein, including, but not limited to, any implied warranties of merchantability or fitness for a particular purpose. The dimensions in this catalog are for reference purposes only and are subject to change without notice. Specifications are subject to change without notice. Consult TE for the latest dimensions and design specifications.